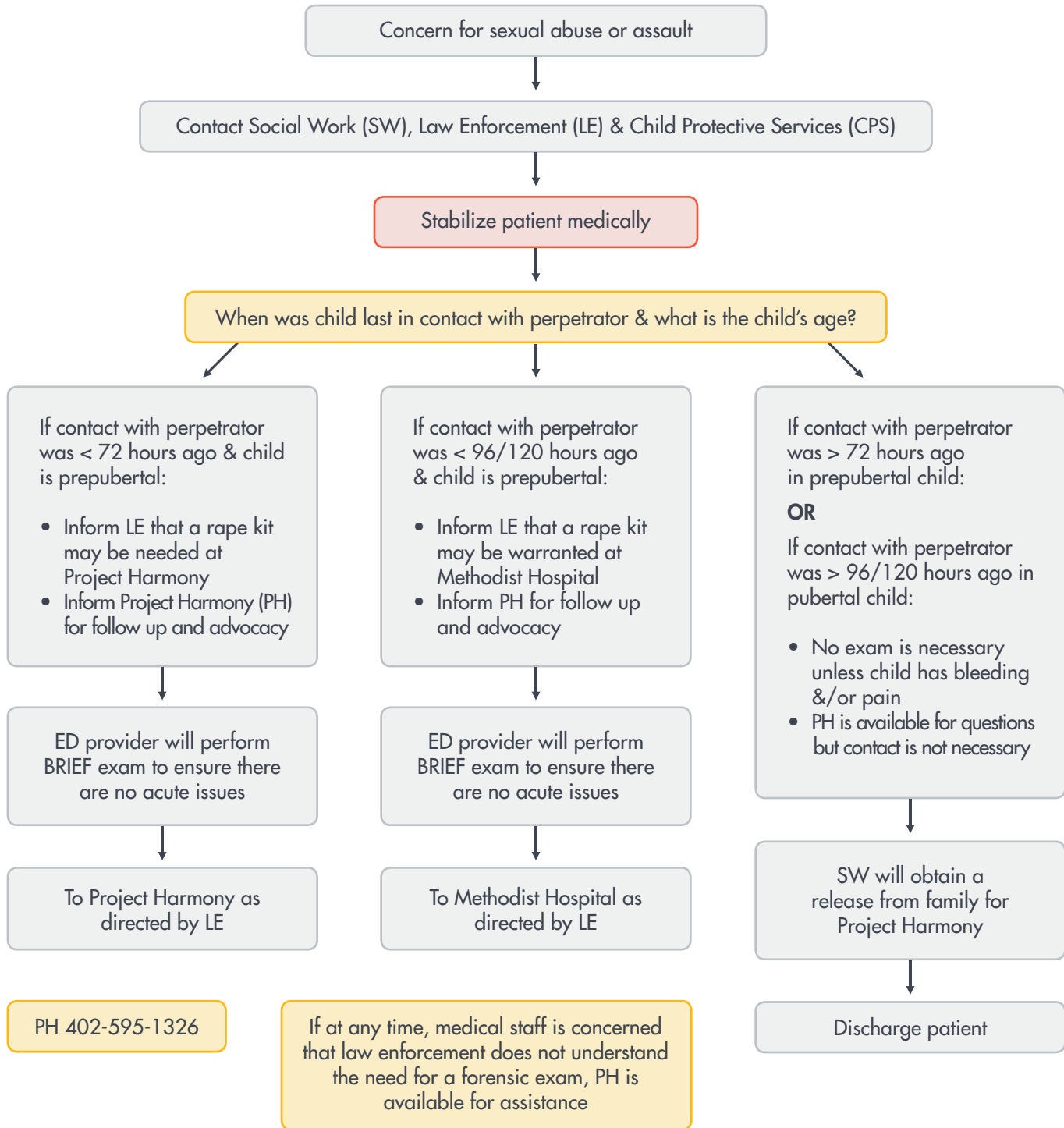


SUSPECTED SEXUAL ABUSE EMERGENCY DEPARTMENT



Regular Information
 Important Information
 Escalating Care

Disclaimer: Pathways are intended as a guide for practitioners and do not indicate an exclusive course of treatment nor serve as a standard of medical care. These pathways should be adapted by medical providers, when indicated, based on their professional judgement and taking into account individual patient and family circumstances.