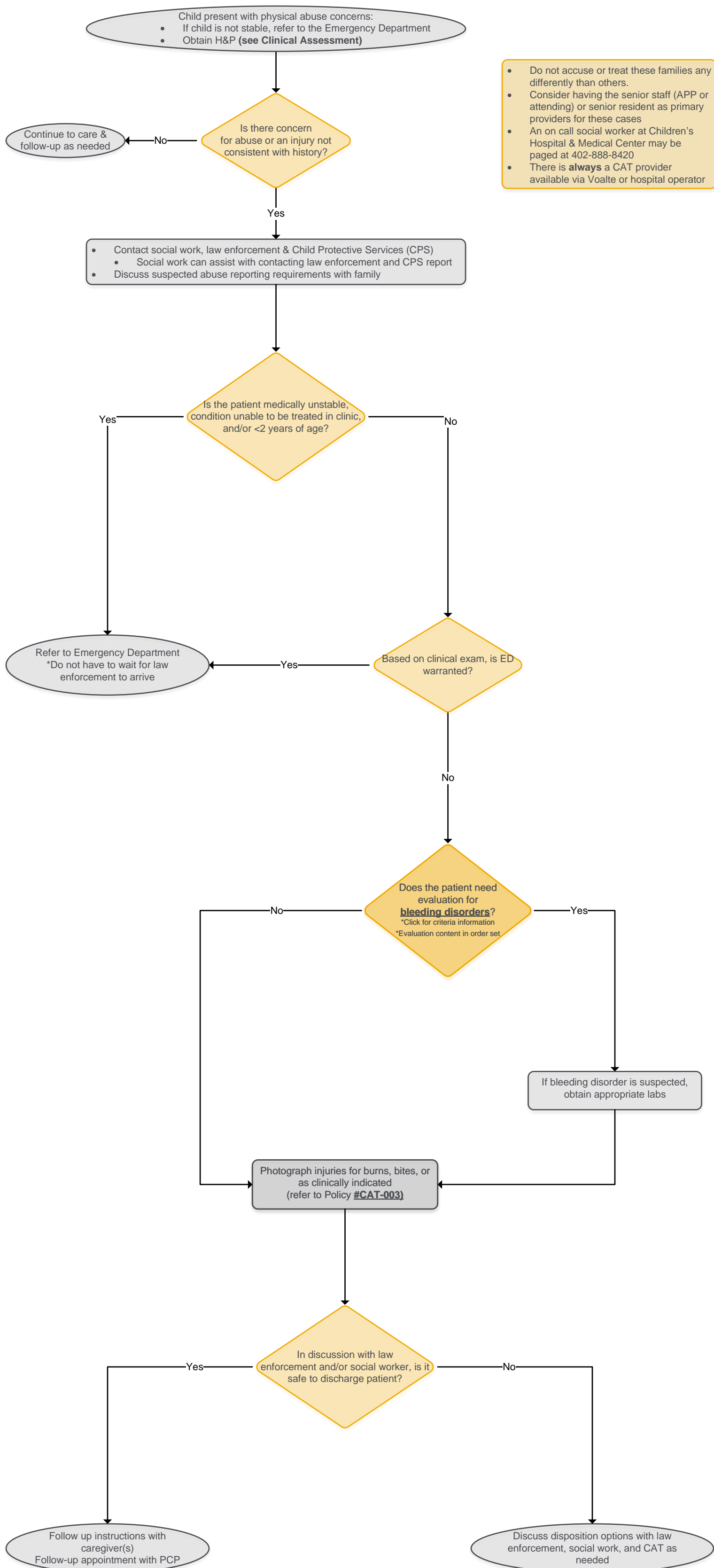


CHILD PHYSICAL ABUSE CLINICAL PATHWAY CLINIC INITIAL WORKUP



- Do not accuse or treat these families any differently than others.
- Consider having the senior staff (APP or attending) or senior resident as primary providers for these cases
- An on call social worker at Children's Hospital & Medical Center may be paged at 402-888-8420
- There is **always** a CAT provider available via Voalte or hospital operator