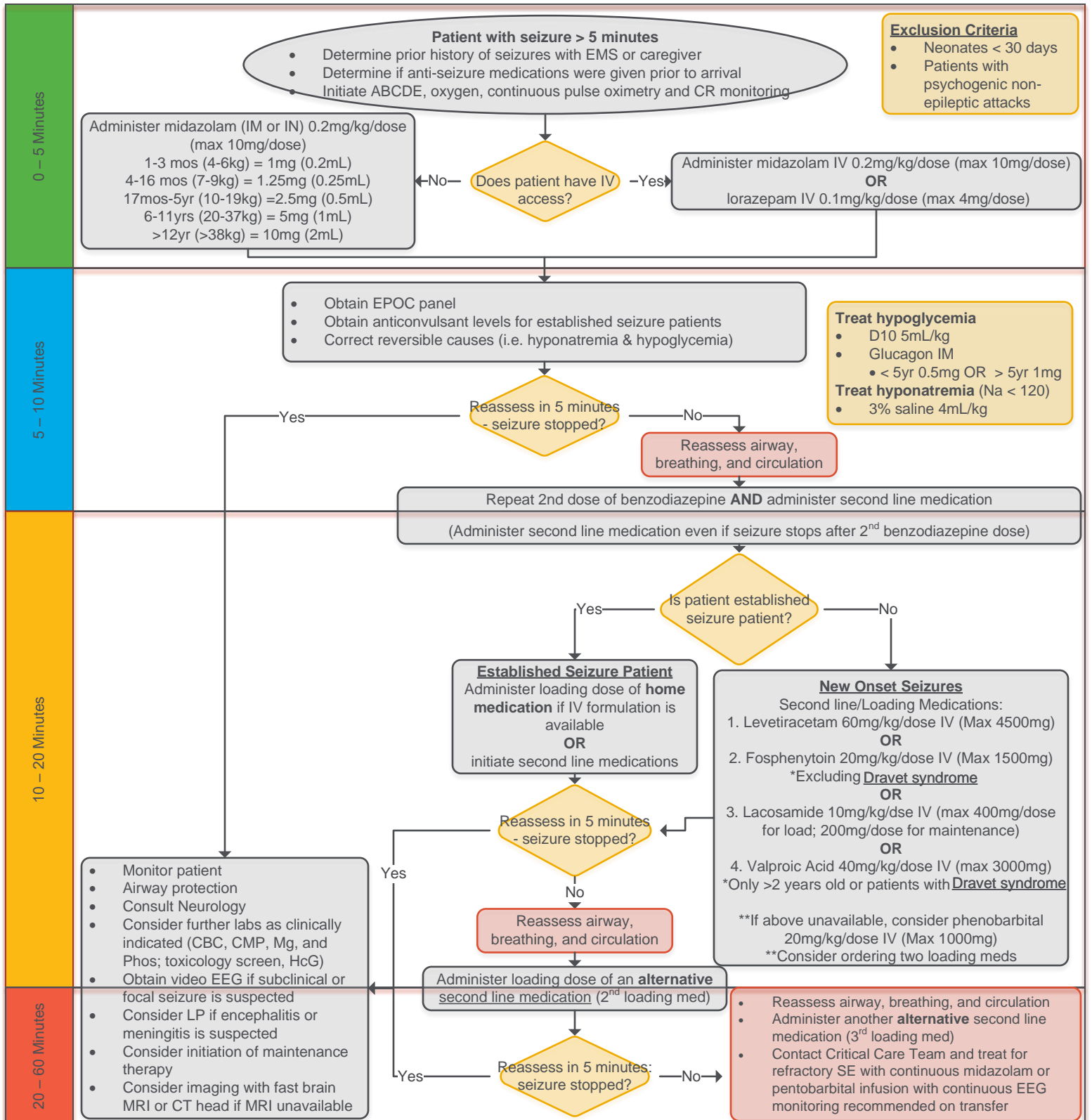


STATUS EPILEPTICUS PATHWAY

EMERGENCY DEPARTMENT



STATUS EPILEPTICUS PATHWAY

EMERGENCY DEPARTMENT

IM/IN Midazolam Dosing

Age (weight)	Dose
1 - 3 months old (4 - 6 kg)	1mg (0.2mL)
4 - 16 months old (7 - 9 kg)	1.25mg (0.25mL)
17 months to 5 years old (10 - 19 kg)	2.5mg (0.5mL)
6 - 11 years old (20 - 37 kg)	5mg (1mL)
> 12 years old (> 38 kg)	10mg (2mL)

1st Line Benzodiazepine Dosing

Midazolam IV	0.2mg/kg/dose (max 10mg)
Lorazepam IV	0.1mg/kg/dose (max 4mg)

Second Line Dosing

Levetiracetam	60mg/kg/dose IV (max 4500mg)
Fosphenytoin	20mg/kg/dose IV (max 1500mg) *Excluding Dravet Syndrome
Lacosamide	10mg/kg/dose (max 400mg/dose for load; 200mg/dose for maintenance)
Valproic Acid	40mg/kg/dose IV (max 3000mg) *Only >2 years old or patients w ith Dravet syndrome
If above medications are not available administer:	
Phenobarbital	20mg/kg/dose IV (max 1000mg)

Infusion Dosing

Midazolam Infusion	Bolus: 0.2mg/kg IV once Follow ed by: Continuous infusion: initiate at 1.5mcg/kg/min Titration: Bolus continuous infusion rate and increase by 1.5mcg/kg/min every 15 minutes as needed for cessation of electrographic seizures on EEG or burst suppression to a max of 33mcg/kg/min
Pentobarbital Infusion	Bolus: 5mg/kg IV once Follow ed by: Continuous infusion: Initiate at 1mg/kg/hr Can bolus 5mg/kg from infusion every 30 minutes until burst suppression Titration: Increase by 0.5 mg/kg/hr every 8 hours as needed to max of 4mg/kg/hr